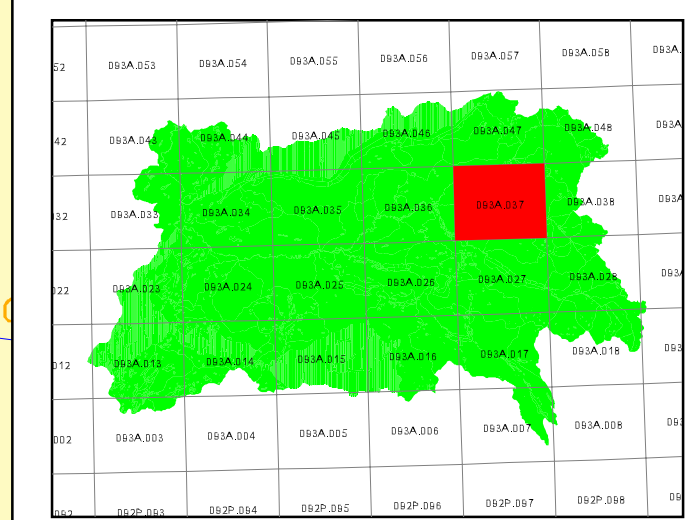
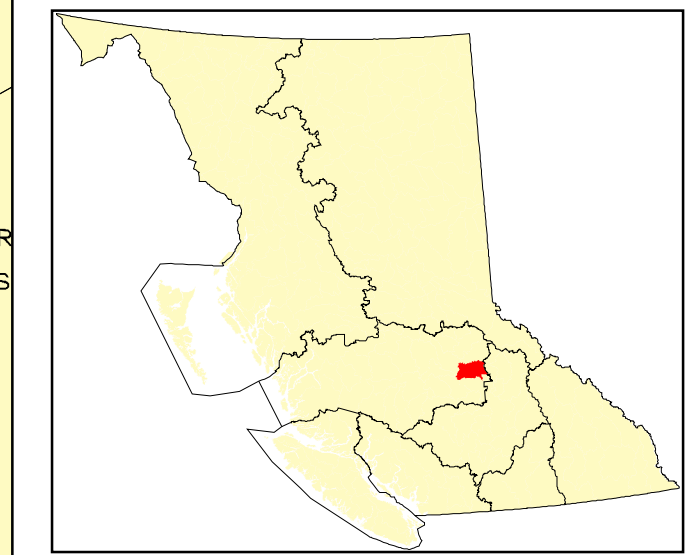
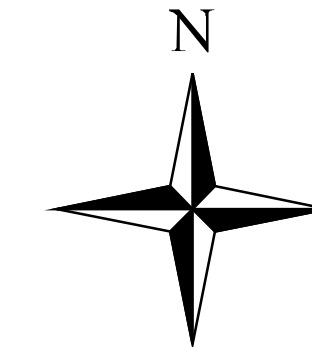
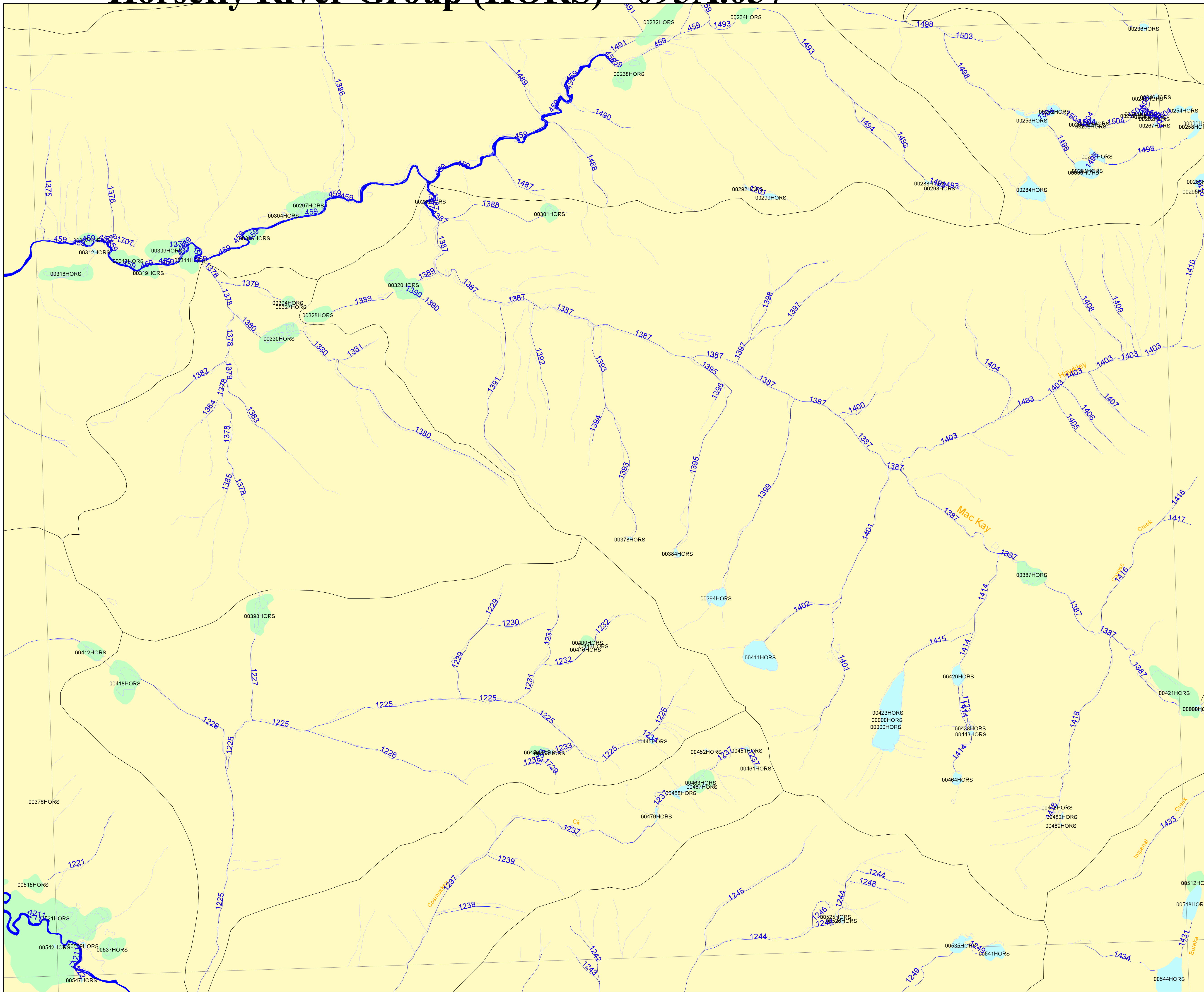


B.C. Watershed Atlas (1:50,000) enlarged to 1:20,000

- Horsefly River Group (HORS) - 093A.037



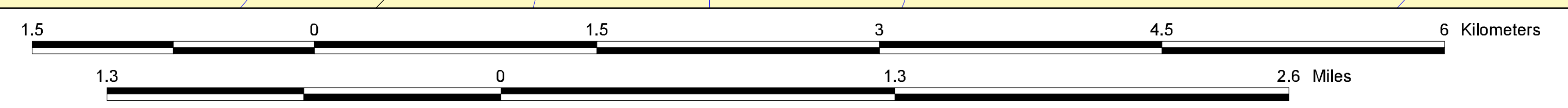
UTM ZONE 10
BCGS (TRIM)
SHEET
093A.037

WCSA Map Series
 Version 2.0 overlaid
 on TRIM.

Legend

- 1:50k Streams
- 1:20k Streams
- Lakes
- Land
- Dbl. River
- Wetlands

TRIM streams/waterbodies (Light Blue) not present on this 1:50k map base (Dark Blue) will require the creation of Interim Locational Points (ILPs) as described in "User's Guide to the British Columbia Watershed/Waterbody Identifier System".



Produced by:
 Ministry of Fisheries,
 Fisheries Inventory Section,
 GIS Applications Unit, Victoria, B.C.
 Wed Dec 16 07:28:51 1998

BL Key	Watershed Codes	BL Key	Watershed Codes
459	16035400	1401	160354077600200400
460	16035400	1402	160354077600200500
461	16035400	1403	160354077600200600
462	16035400	1404	160354077600200700
463	16035400	1405	160354077600200800
464	16035400	1406	160354077600200900
465	16035400	1407	160354077600201000
466	16035400	1408	160354077600201100
467	16035400	1409	160354077600201200
468	16035400	1410	160354077600201300
469	16035400	1411	160354077600201400
470	16035400	1412	160354077600201500
471	16035400	1413	160354077600201600
472	16035400	1414	160354077600201700
473	16035400	1415	160354077600201800
474	16035400	1416	160354077600201900
475	16035400	1417	160354077600202000
476	16035400	1418	160354077600202100
477	16035400	1419	160354077600202200
478	16035400	1420	160354077600202300
479	16035400	1421	160354077600202400
480	16035400	1422	160354077600202500
481	16035400	1423	160354077600202600
482	16035400	1424	160354077600202700
483	16035400	1425	160354077600202800
484	16035400	1426	160354077600202900
485	16035400	1427	160354077600203000
486	16035400	1428	160354077600203100
487	16035400	1429	160354077600203200
488	16035400	1430	160354077600203300
489	16035400	1431	160354077600203400
490	16035400	1432	160354077600203500
491	16035400	1433	160354077600203600
492	16035400	1434	160354077600203700
493	16035400	1435	160354077600203800
494	16035400	1436	160354077600203900
495	16035400	1437	160354077600204000
496	16035400	1438	160354077600204100
497	16035400	1439	160354077600204200
498	16035400	1440	160354077600204300
499	16035400	1441	160354077600204400
500	16035400	1442	160354077600204500
501	16035400	1443	160354077600204600
502	16035400	1444	160354077600204700
503	16035400	1445	160354077600204800
504	16035400	1446	160354077600204900
505	16035400	1447	160354077600205000
506	16035400	1448	160354077600205100
507	16035400	1449	160354077600205200
508	16035400	1450	160354077600205300
509	16035400	1451	160354077600205400
510	16035400	1452	160354077600205500
511	16035400	1453	160354077600205600
512	16035400	1454	160354077600205700
513	16035400	1455	160354077600205800
514	16035400	1456	160354077600205900
515	16035400	1457	160354077600206000
516	16035400	1458	160354077600206100
517	16035400	1459	160354077600206200
518	16035400	1460	160354077600206300
519	16035400	1461	160354077600206400
520	16035400	1462	160354077600206500
521	16035400	1463	160354077600206600
522	16035400	1464	160354077600206700
523	16035400	1465	160354077600206800
524	16035400	1466	160354077600206900
525	16035400	1467	160354077600207000
526	16035400	1468	160354077600207100
527	16035400	1469	160354077600207200
528	16035400	1470	160354077600207300
529	16035400	1471	160354077600207400
530	16035400	1472	160354077600207500
531	16035400	1473	160354077600207600
532	16035400	1474	160354077600207700
533	16035400	1475	160354077600207800
534	16035400	1476	160354077600207900
535	16035400	1477	160354077600208000
536	16035400	1478	160354077600208100
537	16035400	1479	160354077600208200
538	16035400	1480	160354077600208300
539	16035400	1481	160354077600208400
540	16035400	1482	160354077600208500
541	16035400	1483	160354077600208600
542	16035400	1484	160354077600208700
543	16035400	1485	160354077600208800
544	16035400	1486	160354077600208900
545	16035400	1487	160354077600209000
546	16035400	1488	160354077600209100
547	16035400	1489	160354077600209200
548	16035400	1490	160354077600209300
549	16035400	1491	160354077600209400
550	16035400	1492	160354077600209500
551	16035400	1493	160354077600209600
552	16035400	1494	160354077600209700
553	16035400	1495	160354077600209800
554	16035400	1496	160354077600209900
555	16035400	1497	160354077600210000
556	16035400	1498	160354077600210100
557	16035400	1499	160354077600210200
558	16035400	1500	160354077600210300
559	16035400	1501	160354077600210400
560	16035400	1502	160354077600210500
561	16035400	1503	160354077600210600
562	16035400	1504	160354077600210700
563	16035400	1505	160354077600210800
564	16035400	1506	160354077600210900
565	16035400	1507	160354077600211000
566	16035400	1508	160354077600211100
567	16035400	1509	160354077600211200
568	16035400	1510	160354077600211300
569	16035400	1511	160354077600211400
570	16035400	1512	160354077600211500
571	16035400	1513	160354077600211600
572	16035400	1514	160354077600211700
573	16035400	1515	160354077600211800
574	16035400	1516	160354077600211900
575	16035400	1517	160354077600212000
576	16035400	1518	160354077600212100
577	16035400	1519	160354077600212200
578	16035400	1520	160354077600212300
579	16035400	1521	160354077600212400
580	16035400	1522	160354077600212500
581	16035400	1523	160354077600212600
582	16035400	1524	160354077600212700
583	16035400	1525	160354077600212800
584	16035400	1526	160354077600212900
585	16035400	1527	160354077600213000
586	16035400	1528	160354077600213100
587	16035400	1529	160354077600213200
588	16035400	1530	160354077600213300
589	16035400	1531	160354077600213400
590	16035400	1532	160354077600213500
591	16035400	1533	160354077600213600
592	16035400	1534	160354077600213700
593	16035400	1535	160354077600213800
594	16035400	1536	160354077600213900
595	16035400	1537	160354077600214000
596	16035400	1538	160354077600214100
597	16035400	1539	160354077600214200
598	16035400	1540	160354077600214300
599	16035400	1541	160354077600214400
600	16035400	1542	160354077600214500