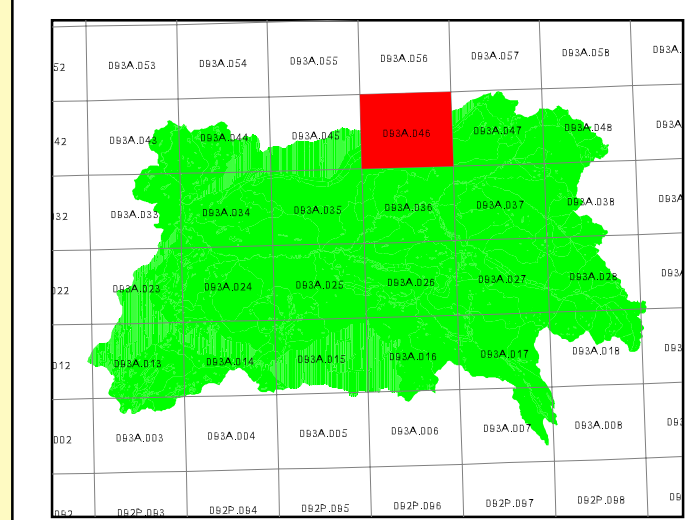
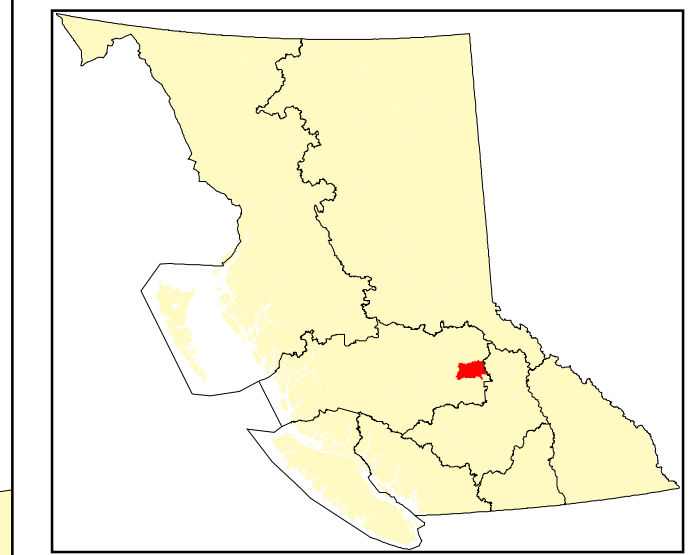
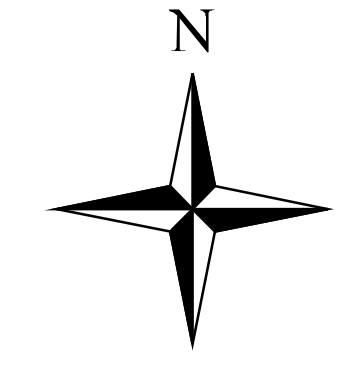
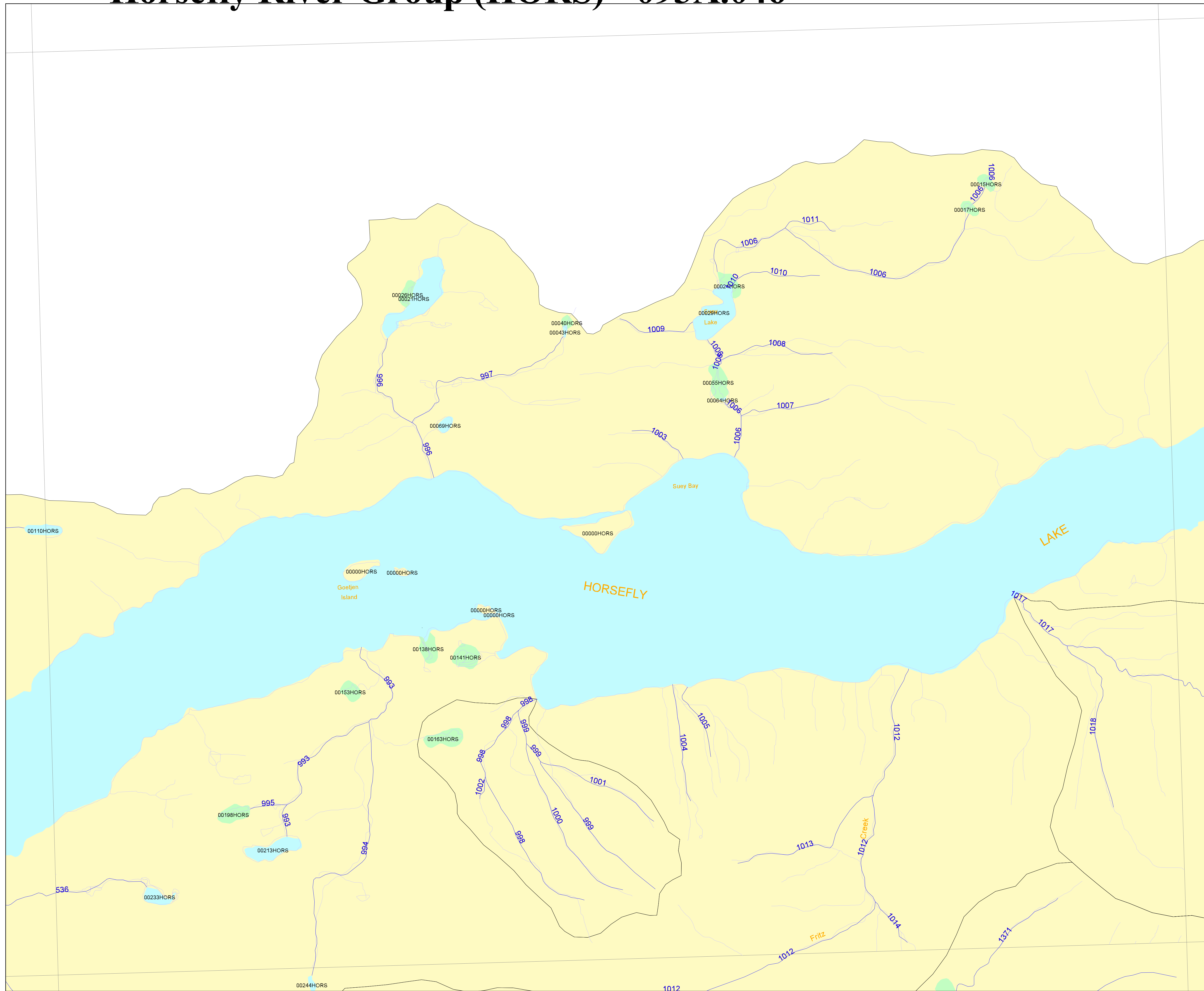


B.C. Watershed Atlas (1:50,000) enlarged to 1:20,000

- Horsefly River Group (HORS) - 093A.046



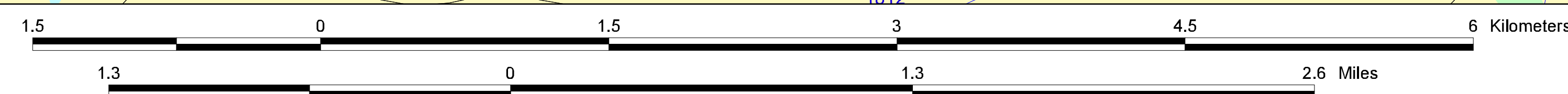
UTM ZONE 10
BCGS (TRIM)
SHEET
093A.046

WSCA Map Series
 Version 2.0 overlaid
 on TRIM.

Legend

- 1:50k Streams
- 1:20k Streams
- Lakes
- Land
- Dbl. River
- Wetlands

TRIM streams/waterbodies (Light Blue) not present on this 1:50k map base (Dark Blue) will require the creation of Interim Locational Points (ILPs) as described in "User's Guide to the British Columbia Watershed/Waterbody Identifier System".



Produced by:
 Ministry of Fisheries,
 Fisheries Inventory Section,
 GIS Applications Unit, Victoria, B.C.
 Wed Dec 16 07:19:57 1998

BL Key Watershed Codes

- 538...160354021410058100
- 991...160354021410058000
- 994...16035402141005803260
- 995...16035402141005807050
- 996...1603540214100571900
- 997...16035402141005719001400
- 998...1603540214100573700
- 999...16035402141005737000400
- 1000...16035402141005737000601420
- 1001...160354021410057370006020400
- 1002...16035402141005737000800
- 1003...16035402141005737000800
- 1004...1603540214100578100
- 1005...1603540214100578100
- 1006...1603540214100579200
- 1007...1603540214100579200710
- 1008...16035402141005792001810
- 1009...16035402141005792002010
- 1010...160354021410057920021710
- 1011...16035402141005792002300
- 1012...16035402141005792002300
- 1013...160354021410058300710
- 1014...160354021410058300710
- 1015...160354021410058300710
- 1016...160354021410058300710
- 1017...160354021410058300710
- 1018...160354021410058300710
- 1019...160354021410058300710
- 1020...160354021410058300710